

COMFORT  
FOR  
YOU

INVERTER  
MULTI-SPLIT  
PRO SYSTEMS



ALPICAIR

# INVERTER MULTI-SPLIT PRO SYSTEMS



## Various Combinations

• Different units for choices, the same comfortable feeling for you.

## Inverter Technology

- Lower energy consumption
- Lower noise, more comfort
- Precise temperature control

## -22°C Low Temperature Option

• Operate finely when heating at -22°C.

## OUTDOOR UNITS



AM20-51HRDC1A



AM30-71HRDC1A  
AM40-81HRDC1A



AM40-100HRDC1A  
AM50-120HRDC1A

# MULTI-SPLIT AIR CONDITIONER OUTDOOR UNIT

MODEL	AM20-51HRDC1A	AM30-71HRDC1A	AM40-81HRDC1A	AM40-100HRDC1A	AM50-120HRDC1A
Cooling capacity, kW	5,3 (2,14-5,8)	7,1 (2,3-9,2)	8,0 (2,3-11,0)	10,6 (2,6-12,0)	12,1 (2,6-15,2)
Heating capacity, kW	5,65 (2,58-6,5)	8,6 (2,8-9,2)	9,5 (2,8-10,25)	12,0 (3,0-14,0)	13,0 (3,0-15,5)
Power input (cooling), kW	1,48 (0,30-2,50)	1,88 (0,60-3,40)	2,12 (0,80-3,60)	3,00 (0,80-4,60)	3,40 (0,80-4,60)
Power input (heating), kW	1,25 (0,40-2,50)	2,23 (0,60-3,00)	2,20 (0,70-3,60)	3,04 (1,00-5,00)	3,19 (1,00-5,00)
Power supply, V/ph/Hz	230/1/50	230/1/50	230/1/50	230/1/50	230/1/50
Rated current, A	11.0	15.0	25.0	30.0	30.0
Efficiency ratio (SEER/COP)	7,2 / 4,2	7,1 / 4,3	7,2 / 4,2	7,2 / 4,0	7,2 / 4,2
Energy efficiency class (cooling/heating)	A++/A+	A++/A+	A++/A+	A++/A+	A++/A+
Refrigerant	R32	R32	R32	R32	R32
Sound pressure (L <sub>p</sub> ), dB(A)	54.0	57.0	58.0	60.0	60.0
Sound power (L <sub>w</sub> ), dB(A)	64.0	68.0	68.0	70.0	72.0
Net dimensions (W×D×H), mm	822×550×352	964×660×402	964×660×402	1020×826×427	1020×826×427
Weight (brutto/neto), kg	34,5/32	52,0/47,5	55,5/51	79/72	80,0/73,0
Piping distance (horizontal (one/all)), m	20/40	20/60	20/70	25/80	25/100
Piping distance (vertical), m	15.0	15.0	15.0	25.0	25.0
Operating conditions in cooling mode, °C	-15 - +43	-15 - +43	-15 - +43	-15 - +43	-15 - +43
Operating conditions in heating mode, °C	-22 - +24	-22 - +24	-22 - +24	-22 - +24	-22 - +24

## INDOOR UNITS

### WALL MOUNTED PREMIUM PRO SERIES



MODEL	AWI-26HRDC1C	AWI-36HRDC1C	AWI-54HRDC1C	AWI-71HRDC1C
Cooling capacity, kW	2.7	3.5	5.2	7.1
Heating capacity, kW	3.0	3.81	5.6	7.8
Ventilator air flow (SHi/Hi/Med/Low), m³/h	610/540/440/390	700/600/480/360	850/680/570/460	1250/1000/900/800
Sound pressure (L <sub>p</sub> ) (SHi/Hi/Med/Low), dB(A)	38/34/29/25	42/35/29/25	44/41/36/30	48/41/38/33
Sound power (L <sub>w</sub> ) (SHi/Hi/Med/Low), dB(A)	54/46/41/37	57/47/41/37	60/54/49/43	64/56/53/48
Net dimensions (W×D×H), mm	894×211×291	894×211×291	1017×221×304	1135×247×328
Weight (brutto/neto), kg	13,0/11,0	13,0/11,0	16,0/13,5	19,5/16,5
Pipe connections (liquid/gas), inch	1/4 - 3/8	1/4 - 3/8	1/4 - 1/2	1/4 - 5/8



LED display



R32 refrigerant



Timer



Cold plasma



Washable filter



Dehumidification function



Child lock



I feel



Auto-restart function



Low noise airflow system

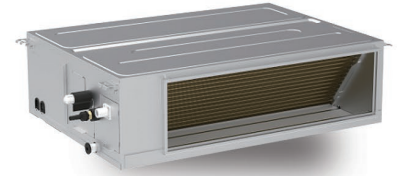


WiFi control



Self-diagnosis

# DUCT TYPE



MODEL	ATMI-26HRDC1A	ATMI-36HRDC1A	ATMI-53HRDC1A
Cooling capacity, kW	2.7	3.5	5.0
Heating capacity, kW	2.8	4.0	5.5
Ventilator air flow (SHi/Hi/Med/Low), m³/h	700/640/580/520	650/520/450/380	880/810/770/730
Sound pressure (L <sub>p</sub> ) (SHi/Hi/Med/Low), dB(A)	41/38/36/34	39/36/34/32	41/39/38/34
Sound power (L <sub>w</sub> ) (SHi/Hi/Med/Low), dB(A)	57/54/52/50	55/52/50/48	57/55/54/50
Net dimensions (W×D×H), mm	710×450×200	710×450×200	1010×450×200
Weight (brutto/neto), kg	22,5/18,5	23,0/19,0	30,0/25,0
Pipe connections (liquid/gas), inch	1/4 - 3/8	1/4 - 3/8	1/4 - 1/2



Turbo mode



Auto-restart function



Timer



I feel



Self-diagnosis



Washable filter



Dehumidification function



Clock

# 4-WAY CASSETTE



MODEL	ACCM1-26HRDC1A	ACCM1-36HRDC1A	ACCM1-53HRDC1A	ACMI-70HRDC1A
Cooling capacity, kW	2.6	3.5	5.0	7.0
Heating capacity, kW	2.7	4.0	5.5	8.0
Power input, W	30.0	30.0	30.0	50.0
Ventilator air flow (Hi/Med/Low), m³/h	560/490/420/350	560/490/420/350	650/490/420/350	1100/950/870/800
Sound pressure (L <sub>p</sub> ) (Hi/Med/Low), dB(A)	41/36/32/28	41/36/32/28	43/36/32/28	44/42/39/37
Sound power (L <sub>w</sub> ) (Hi/Med/Low), dB(A)	57/52/48/44	57/52/48/44	59/52/48/44	62/60/58/55
Net dimensions Body (W×H×D), mm	570×265×570	570×265×570	570×265×570	840×240×840
Net dimensions Panel (W×H×D), mm	620×47.5×620	620×47.5×620	620×47.5×620	950×52×950
Weight Body (brutto/neto), kg	22/17	22/17	22/17	36/29
Weight Panel (brutto/neto), kg	4,0/3,0	4,0/3,0	4,0/3,0	9,5/6,0
Pipe connections (liquid/gas), inch	1/4 - 3/8	1/4 - 3/8	1/4 - 1/2	1/4 - 5/8



Turbo mode



Auto-restart function



Timer



I feel



Self-diagnosis



Washable filter



Dehumidification function



Two-directional airflow

The data is measured under the following conditions (ISO-T1). Cooling: Indoor temp. of 27 °C DB, 19 °C WB, and outdoor temp. 35 °C DB. Heating: Indoor temp. of 20 °C DB, and outdoor temp. of 7 °C DB, 6 °C WB.

V 3.15.0 \* Under our policy of continuous improvement, we reserve the right to change specifications and design without prior notice. [www.alpicair.com](http://www.alpicair.com)